



**Tecumseh North Elem -  
 Shawnee Heights USD 450**

314 SE Stanton Road, Tecumseh, KS 66542  
 (785) 379-5910  
 www.usd450.net  
 Principal: **Katie Bivens**

District Accreditation Status: **Accredited**  
 ESSA Annual Meaningful Differentiation: **2020 data not available**  
 Grades: **PK-6**  
 Superintendent: **Matt Hirsch**

**Demographics**



**442 Students**

- African American 6.79%
- Hispanic 18.78%
- Other 11.09%
- White 63.35%

**Academically Prepared for Postsecondary Success**

The percentage of students who scored at Levels 3 and 4 on the state assessment.

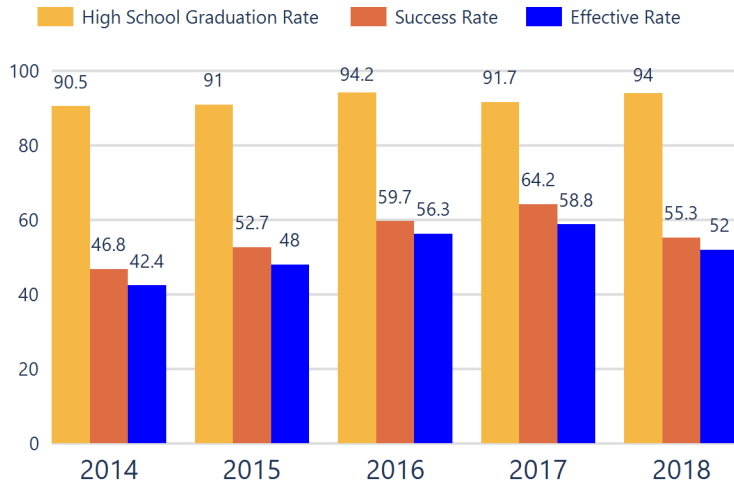
**Assessment scores are not available for the 2020 school year.**

**District Kansans Can Star Recognition**

The awards displayed in this section are for the 2018-2019 school year. Awards for the 2019-2020 school year will be available in April 2021.

	Gold	Silver	Bronze	Copper
Academically Prepared for Postsecondary Success				★
Graduation Rate				
Postsecondary Success				

**District Postsecondary Effectiveness**



**Kansans CAN lead the world!**  
 Graduation **95%**  
 Effective Rate 70-75%

**Five-Year Graduation Avg 92%**

**Five-Year Success Avg 56%**

**Five-Year Effective Avg 52%**

**95% Confidence Interval for the Predicted Effectiveness Rate 53.4 - 55.8%**

The numerator and denominator in the Five-Year Averages contain total student counts over five years (2012-2016).

- Graduation Rate:** The 4-year adjusted cohort graduation rate is the number of students who graduate in four years with a regular high school diploma divided by the number of students who entered high school as 9th graders four years earlier (adjusting for transfers in and out).
- Success Rate:** A student must meet one of the four following outcomes within two years of High School graduation.
  - Student earned an Industry Recognized Certification while in High School.
  - Student earned a Postsecondary Certificate.
  - Student earned a Postsecondary Degree.
  - Student enrolled in Postsecondary in both the first and second year following High School graduation.
- Effective Rate:** The calculated Graduation Rate multiplied by the calculated Success Rate.

**GRADUATION RATE**

The four-year adjusted cohort graduation rate is the percentage of students in a cohort, adjusted for transfers into and out of the school, district, or state, who graduate with a regular high school diploma within four years of entering high school.

**ATTENDANCE RATE**

Rate at which students are present at school, not including excused or unexcused absences.

**CHRONIC ABSENTEEISM**

Percentage of students who miss 10% or more of school days per year either with or without a valid excuse.

**DROPOUT RATE**

The dropout rate is calculated annually and reflects the number of seventh– twelfth grade students who drop out in any one school year. A dropout is any student who exits school between October 1 and September 30 with a dropout EXIT code AND does not re-enroll in school by September 30.

**State: School ESSA Expenditures Per Pupil**

**N/A** 88.3

Expenditures reflect those for the normal day-to-day operation of schools as reported by the Local Education Agency. The following expenditures are excluded: capital outlay, school construction and building improvements, equipment and debt services.

**\$11,164**

**State:** 94.5

**95.7%**

**State:** 13.9

**6.2%**

**Click here for State Financial Accountability.**

**State:** 1.3

**N/A**



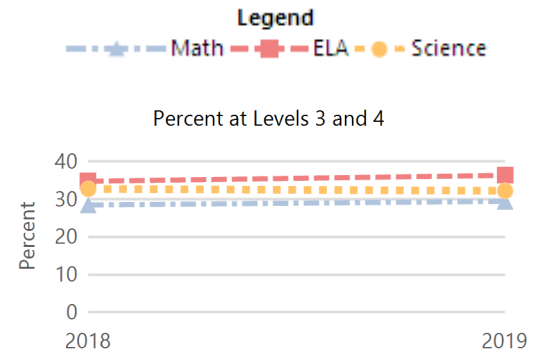
### School Academic Success

State Assessment scores are displayed by student subgroup over three years time in three subjects: Math, English Language Arts (ELA), and Science. Assessment scores are not available for the 2020 school year.

### Academically Prepared for Postsecondary Success

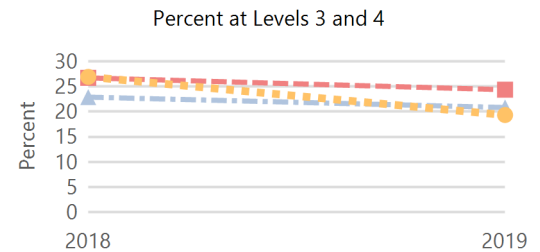
#### ALL STUDENTS

	2017-18			2018-19			2019-20		
	Math	ELA	Sci	Math	ELA	Sci	Math	ELA	Sci
Level 1	27.19	30.54	34.61	26.47	29.11	42.37	N/A	N/A	N/A
Level 2	44.35	34.72	32.69	44.11	34.59	25.42	N/A	N/A	N/A
Level 3	23.01	28.87	19.23	19.74	27.42	28.81	N/A	N/A	N/A
Level 4	5.43	5.85	13.46	9.66	8.86	3.38	N/A	N/A	N/A



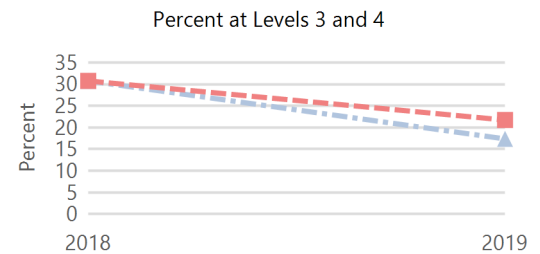
#### FREE AND REDUCED LUNCH STUDENTS

	2017-18			2018-19			2019-20		
	Math	ELA	Sci	Math	ELA	Sci	Math	ELA	Sci
Level 1	35.11	38.16	50.00	36.66	41.17	54.83	N/A	N/A	N/A
Level 2	41.98	35.11	23.07	42.50	34.45	25.80	N/A	N/A	N/A
Level 3	19.08	21.37	15.38	13.33	20.16	16.12	N/A	N/A	N/A
Level 4	3.81	5.34	11.53	7.50	4.20	3.22	N/A	N/A	N/A



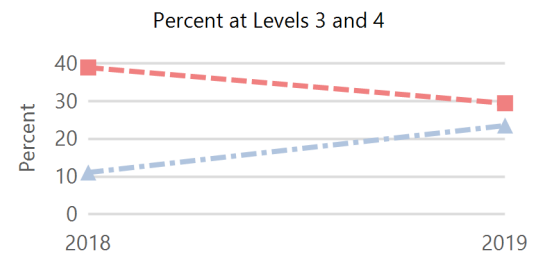
#### STUDENTS WITH DISABILITIES

	2017-18			2018-19			2019-20		
	Math	ELA	Sci	Math	ELA	Sci	Math	ELA	Sci
Level 1	34.61	46.15	N/A	52.17	60.86	N/A	N/A	N/A	N/A
Level 2	34.61	23.07	N/A	30.43	17.39	N/A	N/A	N/A	N/A
Level 3	26.92	23.07	N/A	8.69	8.69	N/A	N/A	N/A	N/A
Level 4	3.84	7.69	N/A	8.69	13.04	N/A	N/A	N/A	N/A



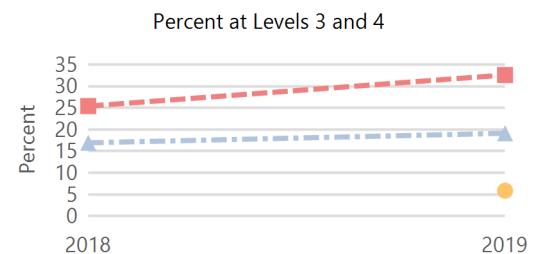
#### AFRICAN-AMERICAN STUDENTS

	2017-18			2018-19			2019-20		
	Math	ELA	Sci	Math	ELA	Sci	Math	ELA	Sci
Level 1	38.88	50.00	N/A	23.52	41.17	N/A	N/A	N/A	N/A
Level 2	50.00	11.11	N/A	52.94	29.41	N/A	N/A	N/A	N/A
Level 3	5.55	27.77	N/A	23.52	29.41	N/A	N/A	N/A	N/A
Level 4	5.55	11.11	N/A	0.00	0.00	N/A	N/A	N/A	N/A



#### HISPANIC STUDENTS

	2017-18			2018-19			2019-20		
	Math	ELA	Sci	Math	ELA	Sci	Math	ELA	Sci
Level 1	35.59	40.67	N/A	38.29	39.13	58.82	N/A	N/A	N/A
Level 2	47.45	33.89	N/A	42.55	28.26	35.29	N/A	N/A	N/A
Level 3	15.25	20.33	N/A	14.89	30.43	5.88	N/A	N/A	N/A
Level 4	1.69	5.08	N/A	4.25	2.17	0.00	N/A	N/A	N/A



N/A: To protect student privacy, when a subgroup has fewer than 10 students, the data are not displayed.

### ACT Performance (2020 School Year)

ACT is a national college admissions exam that includes subject level tests in English, Math, Reading and Science. Students receive scores that range from 1 to 36 on each subject and an overall Composite score. This report provides the average Composite score for the 2020 graduating seniors who took the ACT as sophomores, juniors, or seniors.

Note: Not all eligible students completed an ACT.

Building

State

20.4